



Title III Grant--Activity II

**Developing a Decision Support
System(DSS)**

Supporting Student Success

**Resolving Records Storage
Problems**

Creating a Decision Support System(DSS)

Description and Goals

Developing the Infrastructure

Mission's DSS

Elements and Structure

PARIS(Planning and Research Information System)

Decision Support System

Description and Goals

To strengthen institutional management, strategic planning and decision making

To establish relational databases for effective administration and increased productivity of various user groups

To increase accessibility to institutional data



Decision Support System

Developing the Infrastructure

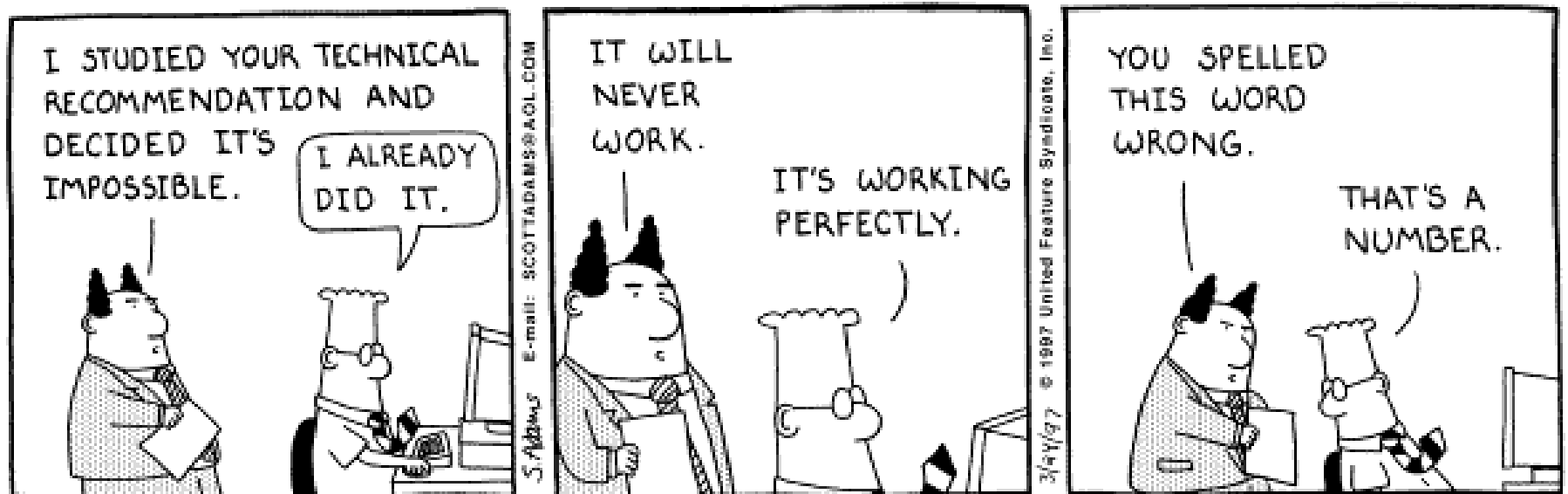
Completion of the Fiber Optic backbone within Mission College

Completion of the Category 5 ethernet cabling at Mission

Purchase of an Alpha computer running Oracle 7 database software

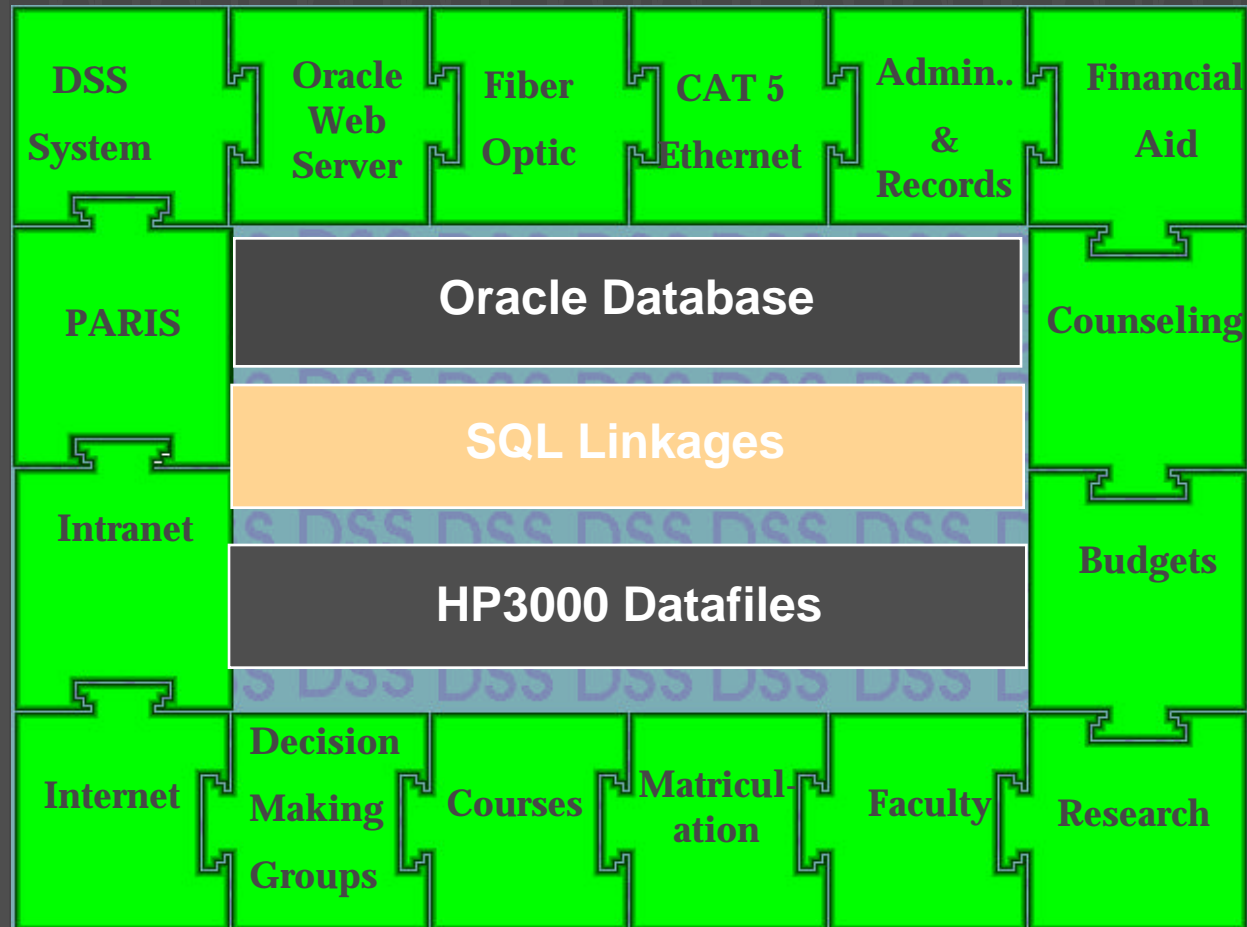
Mirroring 5 years of data from HP to Alpha(No small task!)

No small task indeed! But we did it!



Copyright © 1997 United Feature Syndicate, Inc.
Redistribution in whole or in part prohibited

Mission College's DSS Structure



Current Elements of Mission's Decision Support System

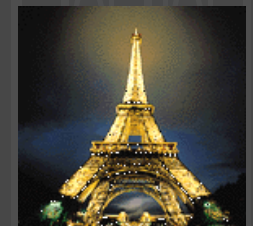
District DSS Elements

District HP 3000 mainframe
Community College Consortium
Administrative System
Alpha Server
Oracle 7 Software
Oracle Web Server(College Intranet)



Mission DSS Elements

Programmer/Analyst
Dedicated Server
PARIS (Planning and Research Information System)



PARIS



(Planning and Research Information System)

General User Interface

HTML(can run on any web browser)

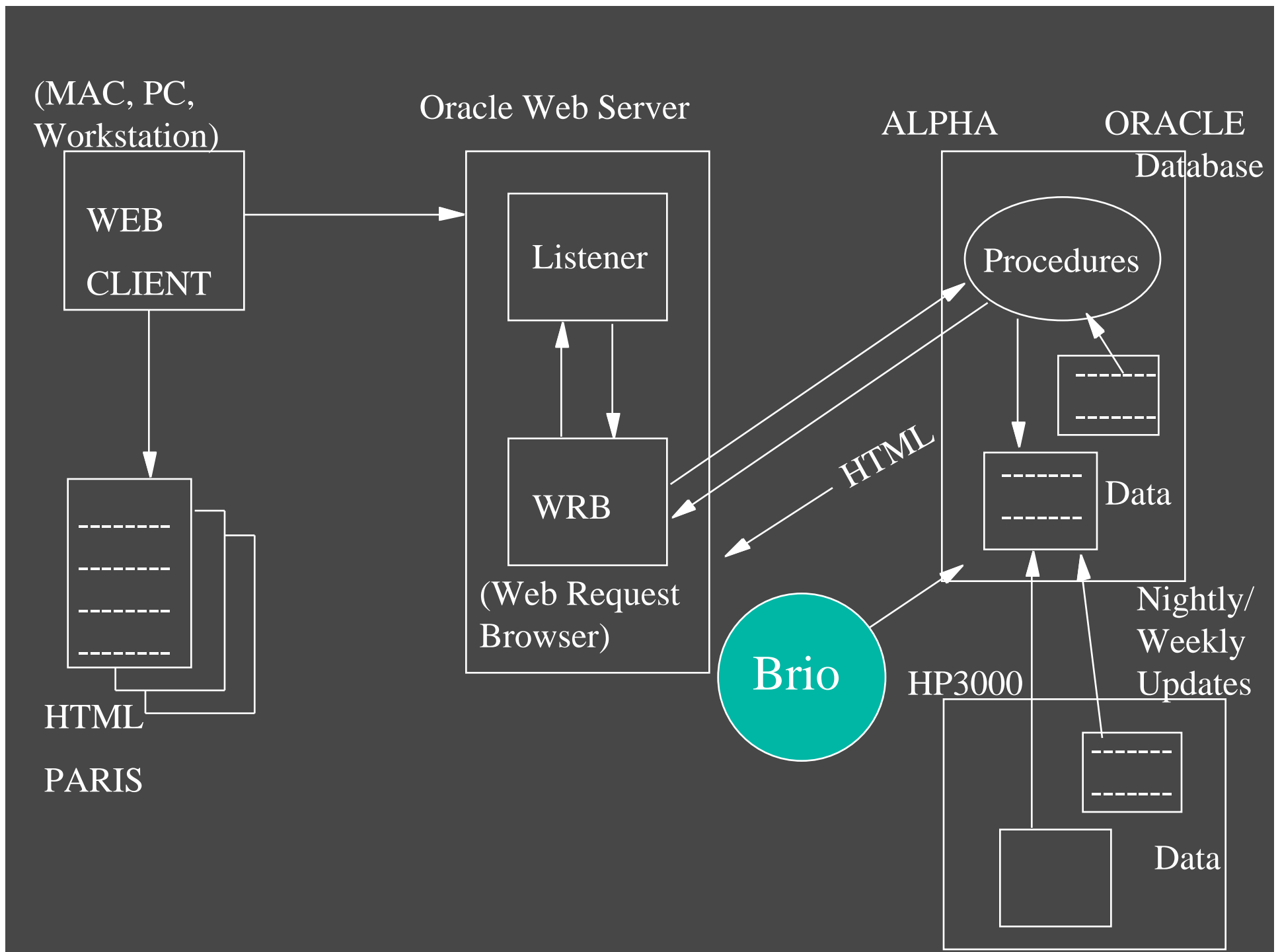
Reports(so far)

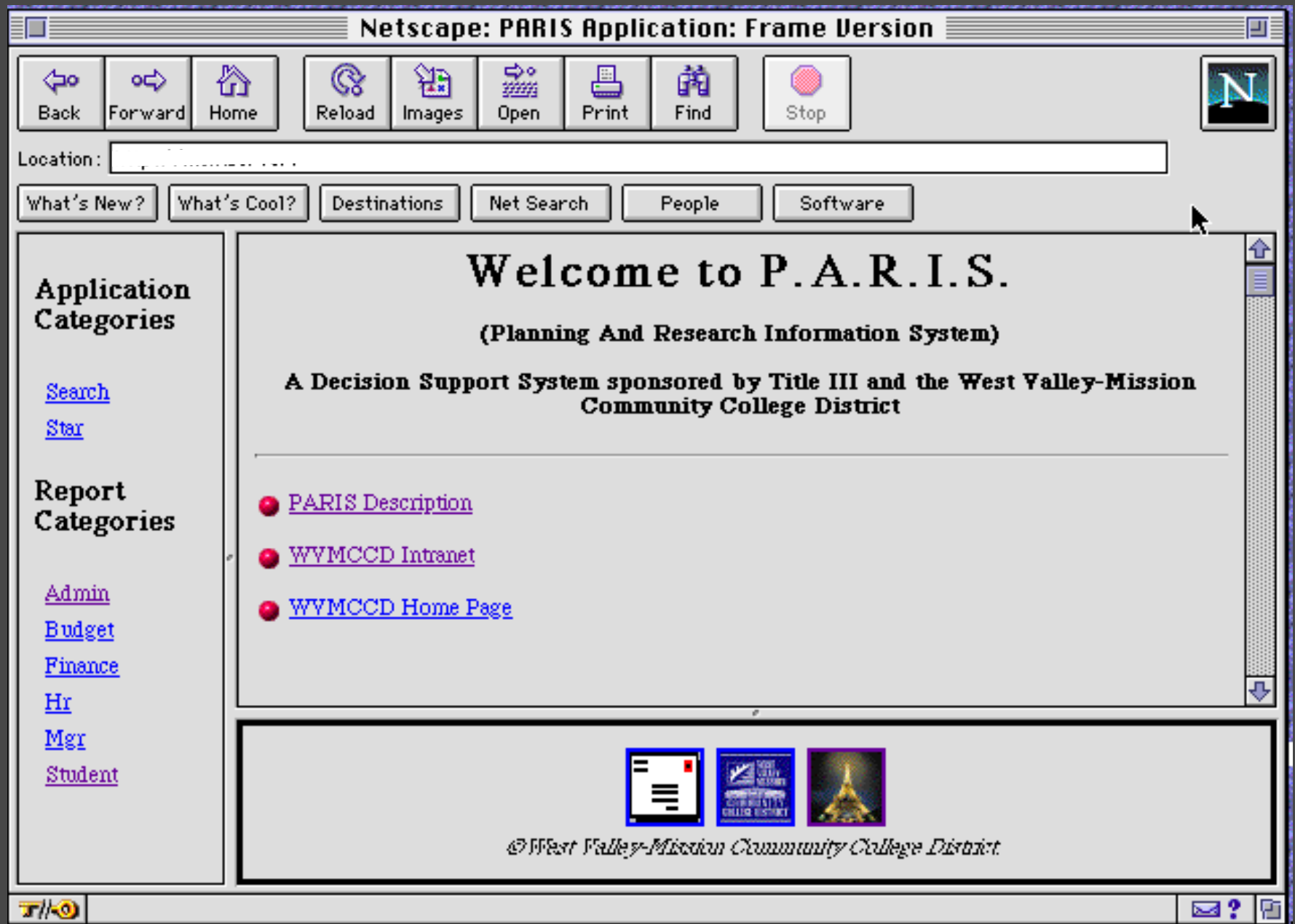
Online Budget Report

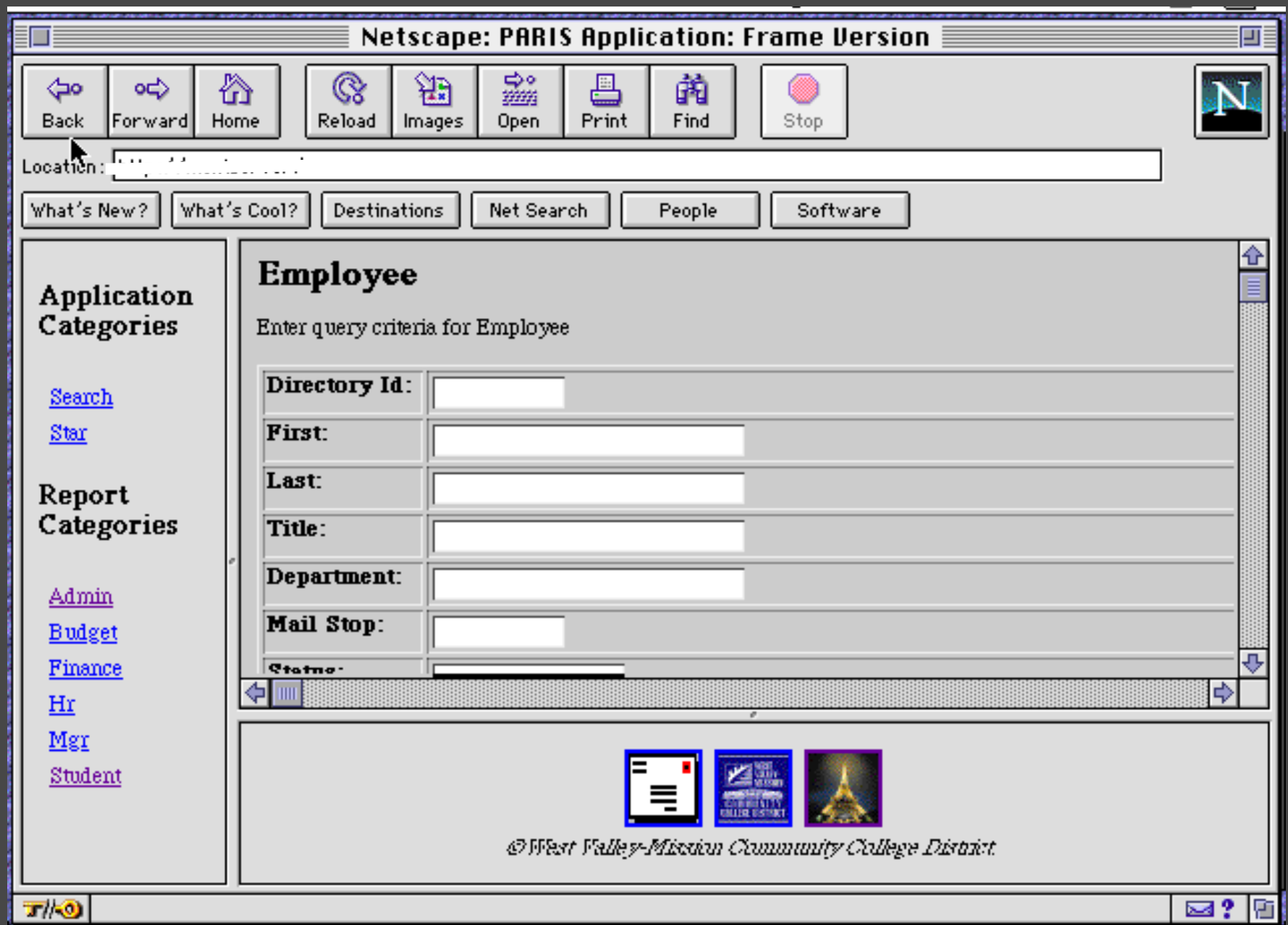
Daily Enrollment Comparison from
Student Information data report

HR and Manager Data

Student information







Supporting Student Success

Student ID Card System

To use one universal card on campus

To track valuable student information to
improve student services
increase retention

Kiosks

Supporting Student Success with Student ID Cards/Card Readers

Progress so far

Over 2500 cards have been made to date

Support service areas to be used

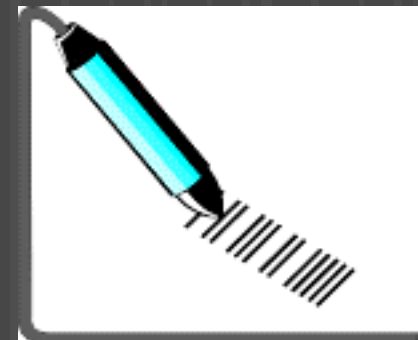
Counseling, Computer Labs, job placement, A&R,
Financial Aid, Library services to name a few

Design

Barcode/magnetic stripe

Card reader hooked up to
MAC or PC

HTML Interface



Kiosks

Some uses

register for classes

acquire a working transcript

find out information & events on campus

register for a counseling appointment

check class enrollment status

Interface

HTML(on college wide Intranet)

Touch screen



Resolving Records Storage Problems



Optical record scanning

Equipment has been purchased

Pilot testing in the fall

Electronic Transcripts

Pilot program between Mission
and San Jose State University

19 electronic test transcripts have been
successfully sent from the district to SJSU

